



HAUSSMANN  
NATURAL STONE

Limestone





Le Louvre, Paris  
Pavillon Richelieu

## WHY USE LIMESTONE?

Limestone has a rich history of use throughout the world and can be found in some of the most important and well-known buildings still standing today: the pyramids of Egypt, European cathedrals and museums, castles of the French Renaissance.

The timeless characteristics of limestone translate well to contemporary residential and commercial applications:

Limestone is versatile, offering a range of colors with subtle patterning that is sure to complement any design.

Limestone is durable and wears well over time, making it an ideal choice for both interior and exterior installations.

Limestone is easy to build with, can be cut and carved to accommodate any space, and can be finished with a variety of textures.

This natural material is not only beautiful and functional, it creates a sophisticated, elegant atmosphere that will add value to any space while still feeling comfortable and welcoming.

Providing the perfect stone for architects, designers, and builders to achieve their vision and elevate their designs is our priority.

At Haussmann Natural Stone we take pride in the stone we supply and strive to bring the rich tradition and quality of fine limestone to modern structures.





Haussmannian style building  
Notre Dame in the background



Baron Haussmann (1809-1891)

We are often asked about the origin of our company's name. It dates back to June 22, 1853 when Baron Haussmann was commissioned by Napoleon III to modernize Paris which was, at the time, a medieval city. Haussmann's most pressing challenge was to widen avenues and establish multiple railway stations around the city to improve traffic circulation.

Once he started, however, Haussmann realized this would be an enormous and complex undertaking. Paris needed to be renovated and updated while maintaining its celebrated building designs. With this in mind, Haussmann went to work and transformed over 60 percent of the city's buildings all while staying loyal to their inspiration. Today, those structures are known as having "Haussmannian style" architecture.

Today's architects and designers are faced with a similar task (though on a much smaller scale) of incorporating natural stone into modern architecture. Our company is inspired by Baron Haussmann because like him, we seek to integrate traditional materials into contemporary standards of design.





Le Louvre Museum  
Cour Puget

## CHOOSING THE CORRECT LIMESTONE

As a natural product, limestone requires knowledge and understanding. Density, finish, and how a stone is quarried are all influences on final selection. The most common misconception about limestone is that it is a soft stone. In reality, limestone can range from very hard to very soft. It should be chosen specifically for how it will be used in the final design while still taking aesthetic preference into account.

A few benefits of limestone include:

- Durability and sustainability
- Temperature and humidity control
- Various color tones that can complement bold architectural features
- Easy to clean and maintain

ASTM International (formerly the American Society for Testing and Materials) classifies limestone in three categories:

**Class I (Light Duty):** Soft limestone best used for dimensional pieces and carving. Most buildings in Paris use these types of stones.

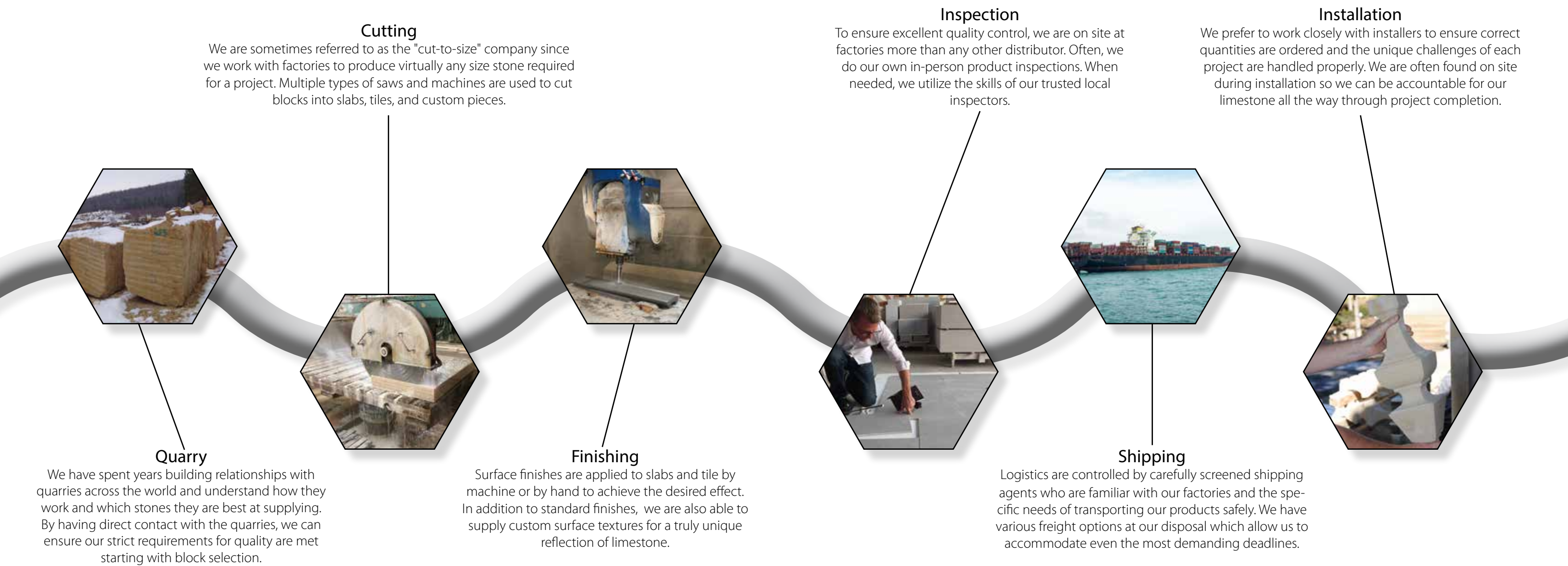
**Class II (Medium Duty):** These stones can be used in thin cladding and residential flooring as well as bath applications.

**Class III (Heavy Duty):** The French call these limestones “Pierres Marbrières,” or literally, marble-like limestones. Comparable in hardness and porosity to harder marbles, these stones can be used in heavy commercial traffic applications and countertops.

A good example of how the correct stone was chosen for the corresponding building application is Le Louvre in Paris. While the original building was built with soft limestone, Saint Maximin, the new interior extension is clad in a medium duty stone, Magny Doré. Also, the new interior flooring is a heavy duty limestone from the Chassagne quarry in France and able to withstand the foot traffic of 8 million visitors a year.



PRODUCTION PROCESS





# PROJECT PROCESS

## Estimating

We thoroughly study the scope of the project and break down each stone, format, and finish to provide an accurate, itemized budget.



## Cut Tickets

Visual representations of the project are created to ensure all details are captured correctly. These drawings take the designer's vision and add the details required for proper installation and factory production. Cut Tickets are the direct link between the installer and the factory overseas.



## Control Samples

Control samples showing the expected color variation and surface finish are key to client satisfaction. Approval of these samples is required to ensure there are no surprises in the range and finish of the final product.



## Production

Once cut tickets and control samples are approved, material is put into production. Our long-standing relationships with experienced factories enable us to confidently produce high quality material that in turn allows architects and designers to achieve their vision.



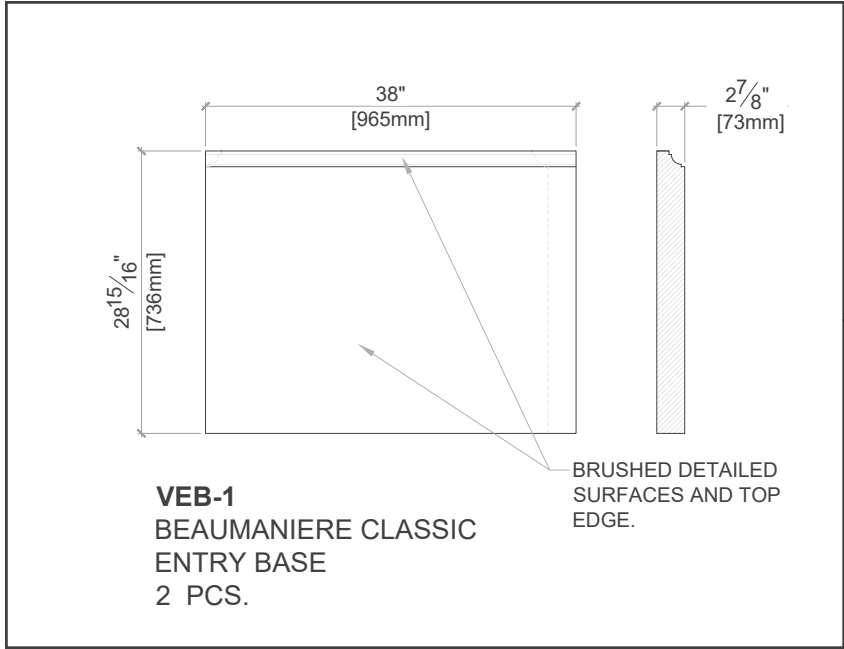
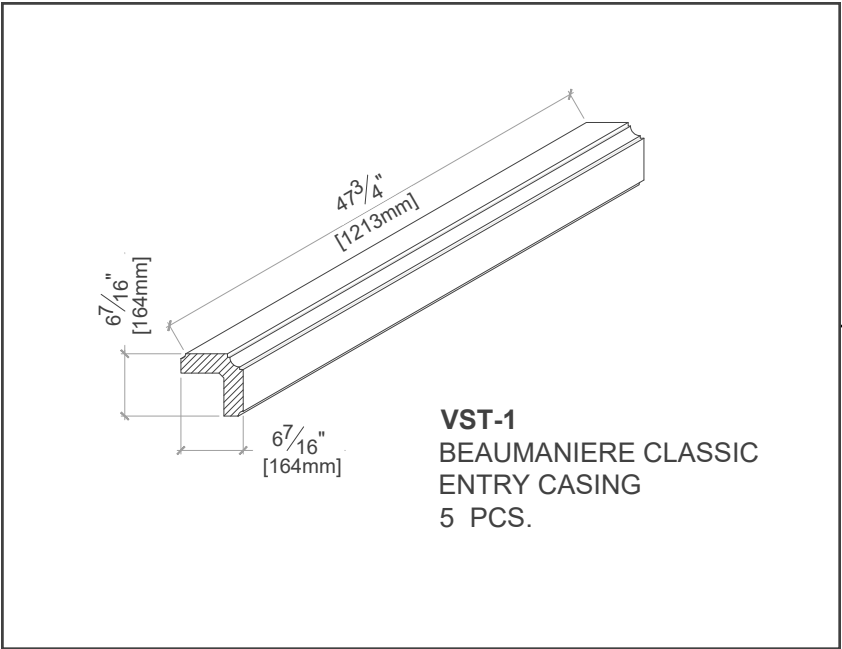
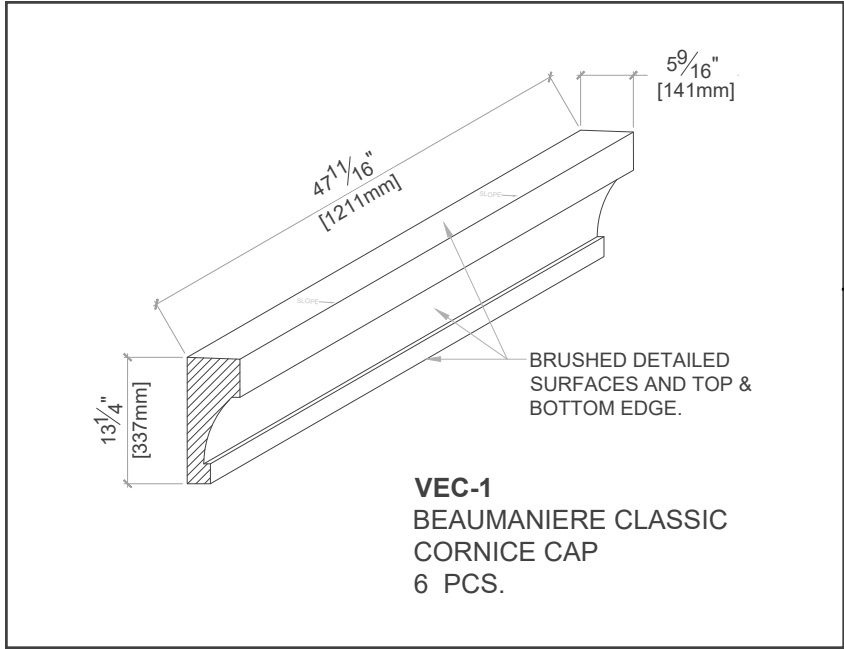
## Quality Control

Upon arrival, each project is evaluated to ensure the proper components are delivered and are within the approved contractual range.



Private Residence, Malibu, CA  
Porto Beige Honed & Corton Beige Linen  
Designer: Agins Interiors  
Architect: Sutton Suzuki Architects  
GC: Holst Construction



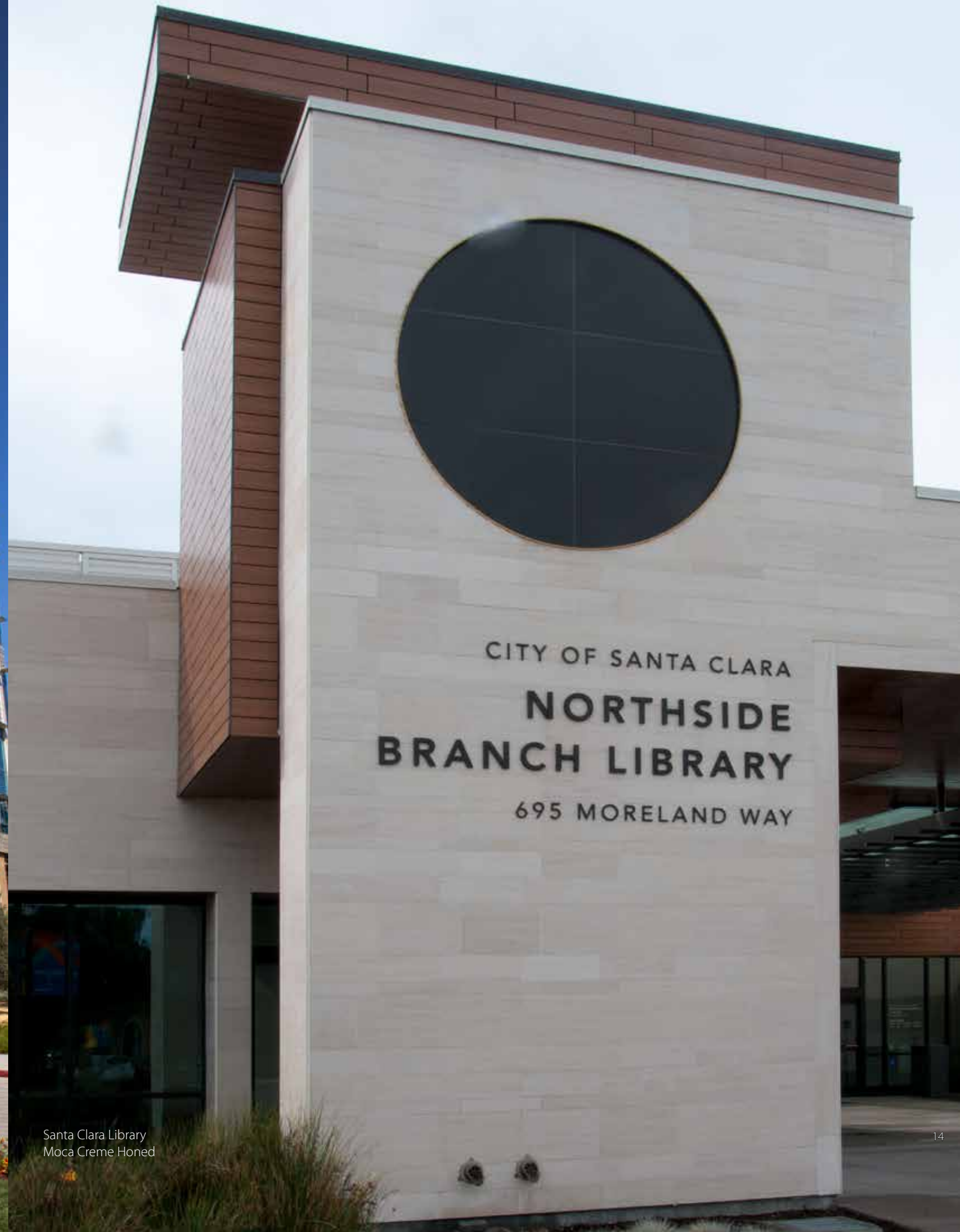


Private Residence, Saratoga, CA  
Beumaniere Classic Honed  
Designer: Anne Munemitsu  
GC: Deacon Construction





Moffett Towers, Sunnyvale, CA  
Buxy Honed  
Architect: DES Architects  
GC: Level 10 Construction



Santa Clara Library  
Moca Creme Honed





Private Residence, Monte Serano, CA  
 Bordeaux Gris Patine  
 Designer: Marla Sher Design  
 Architect: Camargo & Associates, Inc.  
 GC: Trinity Construction Services  
 Installer: Carrington Stonemasons  
 Photo: Studio 52

# CLASS III: HEAVY DUTY STONES



Bardiglio (H)



Belair (H)



Bianco Carrara (H)



Bordeaux Beige (PA)



Bordeaux Gris (PA)



Buxy Beige (H)





Cecina (PA)



Comblanchien (H)



Fonjone / Gascogne Beige (H)



Fontainebleau / Gascogne Blue (H)



Corton Beige (H)



Cote d'Azur (H)



Fossil Oro (H)



Hauteville (H)



Cote d'Or (H)



Crema Marfil (H)



Heather Grey (PA)



Jerusalem Gold (H)





House Beautiful's Kitchen of the Year 2017  
Noir Sully Old World & Carrara Old World  
Designer: DLC - ID



Jura Beige (H)



Jura Grey (H)



Lave Grise (H)



Lave Noire (H)



London Grey (H)



Noir Sully (H)





*Pierre Noire (H)*



*Pistache (H)*



*Pompignan (H)*



*Porto Beige (H)*



*Ramon Grey Gold (H)*



*Ruoms (F)*



Private Residence, Malibu, CA  
 Porto Beige Honed & Corton Beige Linen  
 Designer: Agins Interiors  
 Architect: Sutton Suzuki Architects  
 GC: Holst Construction





St. Louis (H)



St. Croix (H)



Sancerre (PA)



Tao (H)



Villebois Jaune (H)



Zen (H)



Private Residence, Sonoma, CA  
 Sainte Croix Honed  
 Designer: Jessica Hall & Associates  
 GC: Amp Construction  
 Photo: Lisa Romerein





Private Residence, Hillsborough, CA  
 Albi Dalle Rustique & Cote d'Azur Leather  
 Photo: David Eichler Photography

## CLASS II: MEDIUM DUTY STONES



*Albi (H)*



*Ampilly (H)*



*Antique Dore (H)*



*Bateig Beige (H)*



*Bateig Blue (H)*



*Beaumaniere Classic (H)*





Champagne (H)



Lanvignes (H)



St. Marc Dore (H)



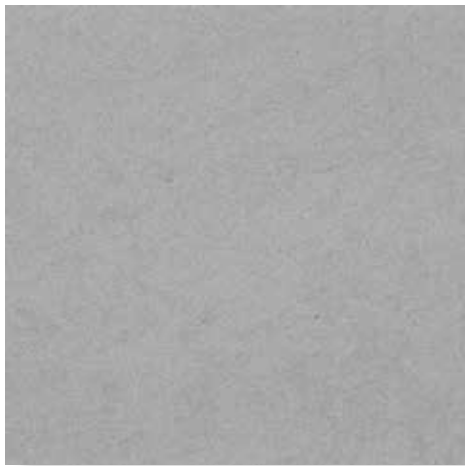
St. Vincent (H)



Massangis (PA)



Moca Creme (H)



Roche Grise (H)



St. Francis (H)



Private Residence  
Roche Grise  
Architect: Ehrlich Yanai Rhee Chaney Architects  
Photo: Matthew Millman



## CLASS I: LIGHT DUTY STONES



*St. Maximin, Roche Construction (H)*



*St. Maximin, Roche Fine (H)*



Stanford University, Palo Alto, CA  
St. Maximin Roche Construction / Roche Fine Honed



Stanford University, Palo Alto, CA  
St. Maximin Roche Construction / Roche Fine Honed





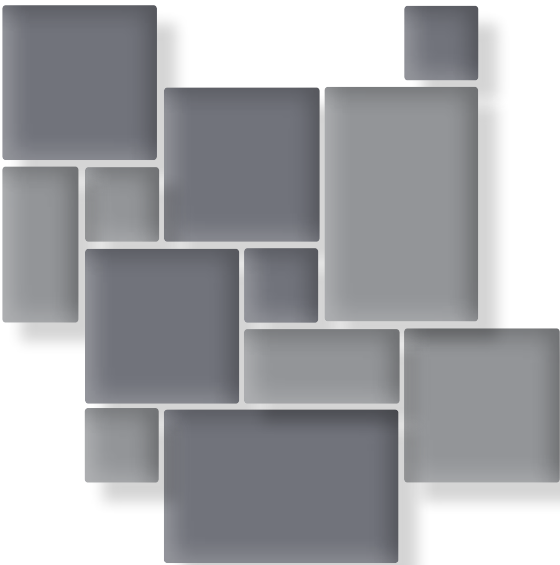
Private Residence, Healdsburg, CA  
Massangis Jaune Clair Patine  
3-PC Pattern



3PC PATTERN



OLD BOURGOGNE PATTERN



MANOIR PATTERN



PROVENCE PATTERN





Private Residence, France  
Antiqued Bar Gris



Terra Cotta Squares



Terra Cotta Hexagons



Antiqued Parefeuilles



Private Residence, Healdsburg, CA  
Antiqued Terra Cotta Hexagons

RECLAIM PROCESS



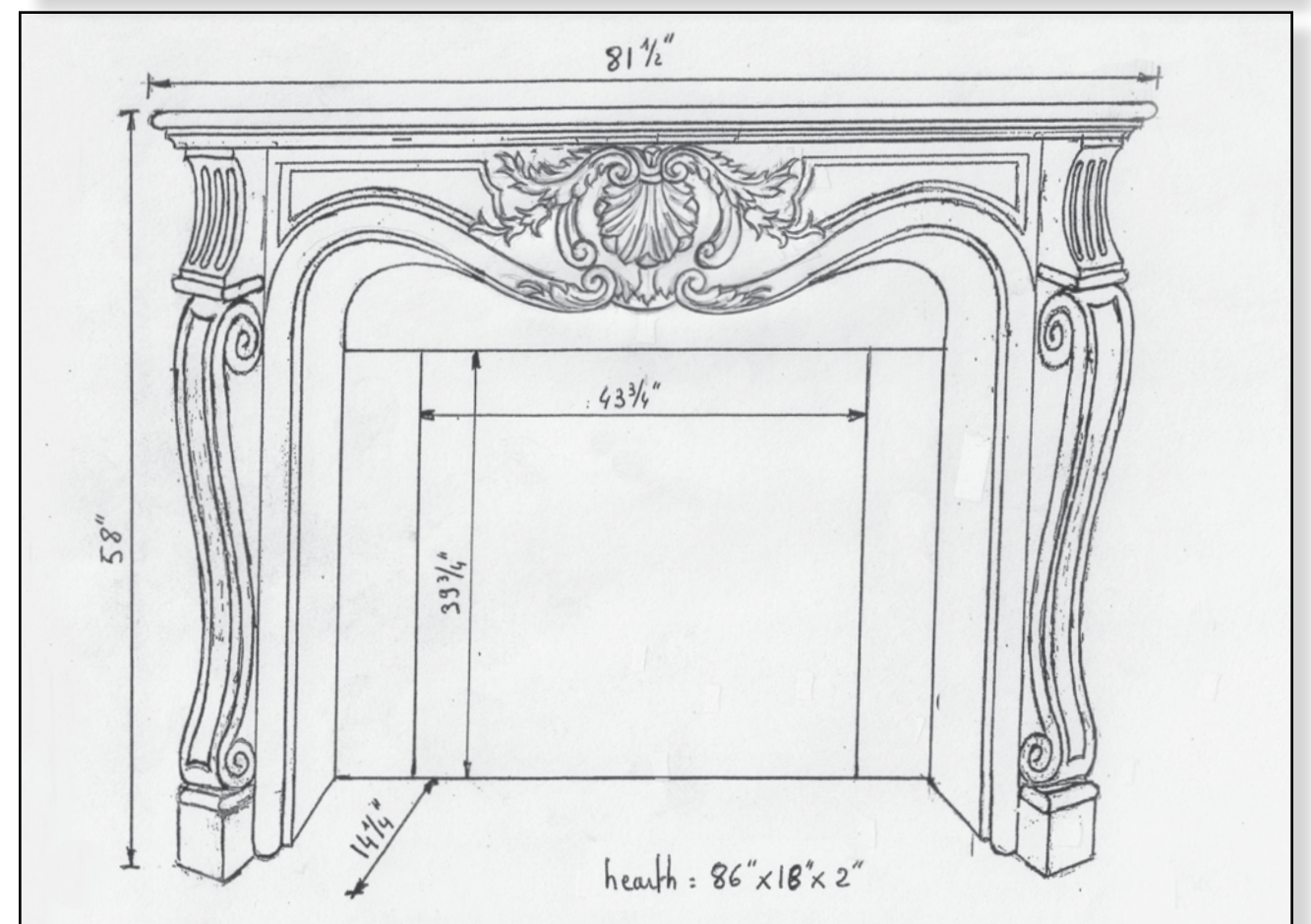




Private Residence, Atherton, CA  
 Belair Honed  
 Designer: Wheeler Design Group  
 Architect: Fergus Garber Young Architects  
 GC: Lencioni Construction



Sketch, Carving, & Image by  
 Preti Studio







Private Residence  
 Cote d'Azur Tooled, Leather, BH, BH+ Brushed  
 Designer: Steven Volpe Design  
 Architect: Butler Armsden Architects  
 GC: Peninsula Custom Homes  
 Installer: Walton & Sons Masonry  
 Photo: Ethan Kaplan

## FINISHES



*Honed*



*Antiqued*



*Bamboo*



*Bush - Hammered*



*Flamed*



*Leather*



*Linen*



*Micro Bush - Hammered*



*Old World*



*Patine*



*Polished*



*Sawn*



*Sand - Blasted*



*Split - Face*



*Tooled*



*Tumbled*



SPECIFICATIONS

Material	Origin	Page	Class	Variation	Stock		Finishes																Freeze/ Thaw
							H	A	B	BH	F	L	Li	MBH	OW	P	PA	S	SB	SF	T	TU	
Albi	Spain	26	II	Limited																			
Ampilly	France	26	II	Moderate																			☼
Antique Dore	Israel	26	II	Limited																			
Bardiglio	Italy	16	III	Moderate																			
Bateig Beige	Spain	26	II	Limited																			
Bateig Blue	Spain	26	II	Limited																			
Beaumaniere Classic	France	26	II	Moderate																			☼
Belair	Portugal	16	III	Limited																			
Bianco Carrara	Italy	16	III	Limited																			☼
Bordeaux Beige	France	16	III	Wide																			
Bordeaux Gris	France	16	III	Wide																			☼
Buxy Beige	France	16	III	Wide																			☼
Cecina	Egypt	17	III	Moderate																			
Champagne	Turkey	27	II	Limited																			
Comblanchien	France	17	III	Moderate																			
Corton Beige	Egypt	17	III	Limited																			☼
Cote d'Azur	Spain	17	III	Moderate																			
Cote d'Or	Spain	17	III	Moderate																			
Crema Marfil	Spain	17	III	Moderate																			
Fonjone/Gascogne Beige	Portugal	18	III	Limited																			
Fontainebleau/Gascogne Blue	Portugal	18	III	Limited																			
Fossil Oro	Egypt	18	III	Moderate																			
Hauteville	France	18	III	Moderate																			☼
Heather Grey	Egypt	18	III	Wide																			
Jerusalem Gold	Israel	18	III	Moderate																			
Jura Beige	Germany	20	III	Moderate																			
Jura Grey	Germany	20	III	Moderate																			
Lanvignes	France	27	II	Moderate																			☼
Lave Grise	Vietnam	20	III	Limited																			☼
Lave Noire	Vietnam	20	III	Limited																			☼
London Grey	Portugal	20	III	Wide																			
Massangis	France	27	II	Wide																			
Moca Crème	Portugal	27	II	Limited																			
Noir Sully	Belgium	20	III	Limited																			☼
Pierre Noire	China	21	III	Limited																			☼
Pistache	Turkey	21	III	Limited																			☼
Pompignan	France	21	III	Wide																			
Porto Beige	Portugal	21	III	Limited																			
Ramon Grey Gold	Israel	21	III	Wide																			☼
Roche Grise	Italy	27	II	Limited																			☼
Ruoms	France	21	III	Moderate																			☼
Saint Francis	Greece	27	II	Limited																			
Saint Louis	Portugal	23	III	Limited																			
Saint Marc Dore	France	28	II	Limited																			☼
Saint Maximim	France	30	I	Limited																			☼
Saint Vincent	France	28	II	Limited																			
Sainte Croix	France	23	III	Moderate																			
Sancerre	Egypt	23	III	Limited																			
Tao	China	23	III	Limited																			☼
Villebois Juane	France	23	III	Wide																			☼
Zen	Spain	23	III	Moderate																			☼

☼ May be used outside in areas that experience freeze/thaw conditions

In Stock

Special Order

FINISHES: H - Honed, A- Antique, B - Bamboo, BH - Bush-hammered, F - Flamed, L - Leather, Li - Linen, MBH - Micro Bush-hammered, OW - Old World, P - Polished, PA - Patine, S- Sawn, SB - Sand-blasted, SF - Split-Face, T - Tooled, TU - Tumbled

GENERAL PRODUCT INFORMATION

Usage, Installation and Care of Natural Stone

INSTALLATION

Because the purchase of natural stone for a home or commercial project represents a significant investment, proper installation is critical. To help ensure a successful installation, please take note of the steps outlined below:

- Select your installer or fabricator with consideration and care. We also recommend that you request referrals from previous clients before making your final decision.
- Make sure your installer understands the special patterns or blending requirements that are part of the job. To ensure satisfactory results, we strongly recommend blending all tiles before installation.
- See that your installer reviews and understands any special installation procedures recommended for specific products.
- For specific questions or accepted industry standards, please refer to the following sources:

Natural Stone Institute  
380 E Lorain St. Oberlin, OH 44074  
PH: 440-250-9222; [www.naturalstoneinstitute.org](http://www.naturalstoneinstitute.org)

Tile Council of North America  
100 Clemson Research Blvd. Anderson, SC 29625  
PH: 864-646-8453; [www.TCNAtile.com](http://www.TCNAtile.com)

ADVISORIES

Regarding Honed Stone Tile

Stone tile with a honed finish is a popular choice for flooring. Specific stones react differently to the honing process due to the stone’s hardness and composition. Some very hard stones may show slight swirl marks or unevenness in surface finish that may become apparent when the stone is exposed to reflective light. This is not considered a defect, but a natural characteristic of the stone. Please carefully inspect your purchase of honed stone tile before installation. If you find the finish unacceptable, please notify Haussmann Natural Stone. No allowances or claims will be accepted for swirl marks or uneven finishing after installation.

Regarding Installing Natural Stone Products in a Shower

Haussmann Natural Stone recommends that the substrate beneath, and pertaining to, the tiling of shower walls and floors with natural stone products (tiles, mosaics, slabs) has a waterproof membrane system installed prior to the installation of tile. No allowances or claims will be accepted for damage to natural stone products installed in a shower that does not have a waterproof membrane system.

Regarding Stone Countertops

Natural stone can make an excellent surface for kitchen countertops, bars, and lavatory tops. The life and enjoyment of your natural stone countertop will be enhanced by observing a few simple procedures:

- Never cut directly on your countertop – always use a cutting board
- Clean up liquid spills promptly
- Use a trivet or hot pad between countertop and very hot cookware
- Do not use harsh abrasive cleaners or cleaning pads
- Be aware that acidic materials such as lemon juice and vinegar can etch some stone surfaces, especially limestone, marble, and travertine
- Because normal wear and tear can affect even the most durable stone, you may experience some scratching and chipping over time

Regarding Moisture Barrier and Antifracture Membrane

When stone is installed on a concrete slab at ground level, it is the responsibility of the buyer and installer to ensure that a proper moisture barrier is in place prior to installation.

Regarding Porous Materials

For porous materials, some efflorescence and/or spotting from the setting material may occur during installation of thin (3/8”) tiles. Sealing the back of the tile prior to installation of the stone will help prevent such occurrences.

Regarding Installation in Freeze/Thaw Conditions

Materials suitable for use as flooring in areas that experience freeze/thaw conditions must be installed on a slope to allow for water drainage and have waterproof grout joints.

INDUSTRY ACCEPTABLE TOLERANCES

Industry standards allow for variation from a specified value regarding size, thickness, etc. of natural stone products. Material should fall within the range of specified tolerances as outlined in the Natural Stone Institute’s Dimension Stone Design Manual. Haussmann Natural Stone will not accept claims for variation within approved ranges.

SEALING RECOMMENDATIONS

Sealing is an essential step in protecting the beauty and ensuring the longevity of a Haussmann Natural Stone product. We recommend sealing all natural stone products with a penetrating sealer, such as Dry-Treat Stain-Proof or MORE Premium Stone Sealer. Please consult a Haussmann Natural Stone sales representative to find out which type of sealer product is appropriate for your material. In addition, we recommend sealing all porous non-polished stones (limestone, marble, travertine, etc.) prior to grouting. This prevents grout from staining or affecting the color of the stone. As part of a normal maintenance procedure, all natural stone products require re-sealing on a regular basis. Please consult the manufacturer of your sealer to find out the time frame for re-sealing based on traffic patterns and use.

Please note: Haussmann Natural Stone provides recommendations for sealing products as a service to consumers only. Haussmann Natural Stone does not warranty, and will not be responsible for, any claims regarding sealers.

CONTINUING CARE AND CLEANING RECOMMENDATIONS

Stone is a natural product, and care should be taken to protect it from harsh abrasive cleaners and abrasive cleaning tools. While the right product for cleaning specific stones varies, we generally recommend products such as MORE Surface Cleaner & Protector. As with other flooring products, stone tile floors may require occasional professional cleaning to maintain or restore their natural appearance.

KEY TO USAGE GUIDE FOR NATURAL STONE PRODUCTS

Durability Codes

The following codes provide a general guide for the appropriate application of Haussmann Natural Stone products. Please discuss your specific application environment with a sales representative before finalizing your selections.

**Class I (Light Duty)** – These stones are suitable for vertical applications and dimensional pieces with the exception of steam showers. They are not generally recommended for paving applications.  
**Class II (Medium Duty)** – These stones are intended for use in all interior residential applications, including patio areas\*, flooring, and countertops\*\*. These stones are also appropriate for many commercial applications such as light traffic\*\*\* interior flooring, exterior\* and interior vertical applications.  
**Class III (Heavy Duty)** – These stones are extremely hard, making them suitable for all light and medium duty applications as well as most interior and exterior\* commercial applications. Recommended uses include heavy traffic\*\*\* residential and commercial flooring and other areas that require maximum durability.

\*Some Medium and Heavy Duty stones cannot be used in exterior applications in areas that experience freeze/thaw conditions. Please consult the specification sheet for this information.  
\*\*Some Heavy Duty stones may be subject to scratching or etching when used as countertops. Please see notes about stone countertops located in the left column of this page.  
\*\*\* Light, Medium, and Heavy traffic refer to pedestrian traffic only. If stone is to be installed in an area with vehicular traffic, please contact a Haussmann Natural Stone sales representative to inquire about thickness and installation requirements.

Variation and Uniformity Codes

Natural stones are products of nature and no two pieces are exactly alike. All natural stones have unique variations and inclusions that are impossible to show in a photograph or sample. For this reason, all stone tile and slabs should be unpacked and inspected prior to installation. Haussmann Natural Stone cannot accept claims for variation in any stone after installation.

**Limited Variation** – Stones in this category are relatively uniform in background color, veining, and movement.  
**Moderate Variation** – Stones in this category exhibit some variation in background color, veining, and movement. Blending these materials during installation is strongly recommended to ensure satisfactory results.  
**Wide Variation** – Stones in this category exhibit a wide range of variation in color, veining, and movement. Blending these materials during installation is required to ensure satisfactory results.

CLAIMS AND ALLOWANCES

Installation constitutes acceptance. Claims regarding color range, finish and tolerances can only be made prior to installation.

Shipping claims need to be documented upon receipt of material on the freight carrier’s BOL. If damage is not noted, claims will not be accepted.

Haussmann Natural Stone’s liability is limited to material only and excludes labor charges related to installation or removal of product.





HAUSSMANN  
NATURAL STONE

HAUSSMANN NATURAL STONE, INC., 1963 ALPINE WAY, HAYWARD, CALIFORNIA 94545 USA  
PH: 510.782.5100 FX: 510.782.5151 [WWW.HAUSSMANNSTONE.COM](http://WWW.HAUSSMANNSTONE.COM)